

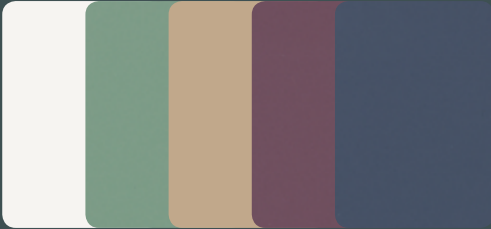
Cover picture: Lamp Helena

Designer: Mirco Mertens



INTERIOR DESIGN IDEAS

GetaCore®

**Uni decors**

This range offers a vast choice from bright colour shades to pastels – also when being combined with other decors and materials.

**Fine/Coarse decors**

Fine decors impress with their modest reservation whereas coarse decors have a distinctive and eye-catching appearance – like the Lime Sand, Crystal and White lines prove.

**Star/Terrazzo/Raindrops/Veneto decors**

The flamboyant impressive line. Light and colour display are applied in a targeted manner.



All GetaCore® decor scans are available under:  
<http://www.westag-getalit.de/en/plywoodformwork/brands/getacore/qualitydecors/>



Decor: GC 2011

**Object**

nhow Hotel, Berlin

**Architect**

Karim Rashid

**Manufacturer**

Kaiser, Untergriesbach

**Flexible and design-oriented**

The advantages of the 3 mm material are plain to see: low material effort in combination with an economical wood-based material which can also be combined with 10 mm GetaCore®.



Decor: GC 2388

### **Functional and easy to clean**

Every day, we need and consume water. In kitchens and bathrooms, in laboratories and medical practices, at home and elsewhere. Water represents purity, freshness and inspiration. GetaCore® exactly meets these requirements. The warm haptics, the especially easy-care surface and the joint-free design are for example ideally suitable for the design of a shower wall.





Decor: GC 8558

## Expressive and hygienic

With GetaCore® both aesthetics and function are in balance. This applies to the kitchen worktop and to more sophisticated project solutions. By means of the batch free production of GetaCore®, the Solid Surface material, basins and sinks can be undermounted with seamless joints. The warm haptics, the joint free appearance, the surface renewal and the thermoformability are only some of the outstanding material properties of GetaCore® which make it stand out against other materials.

## LIGHT



Decor: GC 2004

### Object

Standard lamp "Helena"  
Masterpiece

### Designer/Manufacturer

Mirko Mertens

### Shape and light

GetaCore® offers scope for the development of design-oriented creations. Two- or three-dimensional forms with narrow radii can easily be created with the thermoformable material in thickness of 3 and 10 mm. As an additional feature, some of the homogeneously coloured material decors can be illuminated, creating an impressive backdrop.



Decor: GC 2011

**Object**

Loudspeaker „Evince“

**Designer**

Thomas Scherer  
Audio Engineering

**Manufacturer**

Hündling Plattentechnik  
GmbH, Senden

**Photographer**

Jens König

**Design and technology**

Artworks can be created with GetaCore® – for unique pieces and for individual interior design. The optically seamless joints and the easy formability support the implementation.





Decor: GC 2011

### Object

noi – prodotto italiano,  
Paderborn

### Manufacturer

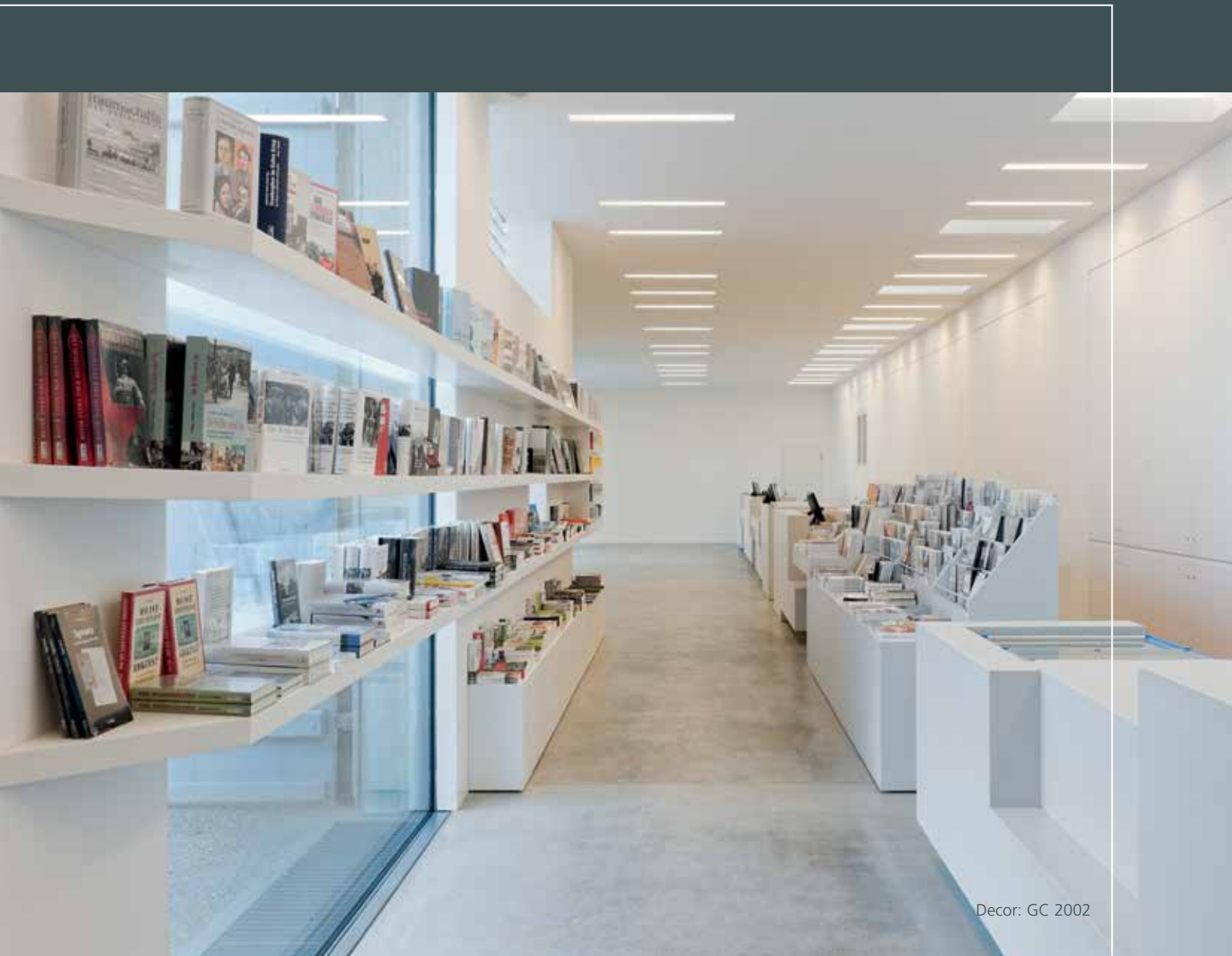
Schuster Innenausbau  
GmbH, Geseke

### Photographer

Jörn von Soldenhoff  
[www.vonsoldenhoff.de](http://www.vonsoldenhoff.de)

### High performance and effective

Milled logos and also intarsia can be accomplished for different elements and objects and offer individual solution approaches to the manufacturer. GetaCore® provides a vast choice for an impressive presentation.



Decor: GC 2002

**Object**

Memorial place Berlin-  
Hohenschönhausen

**Manufacturer**

barth Innenausbau  
KG / S.a.s.

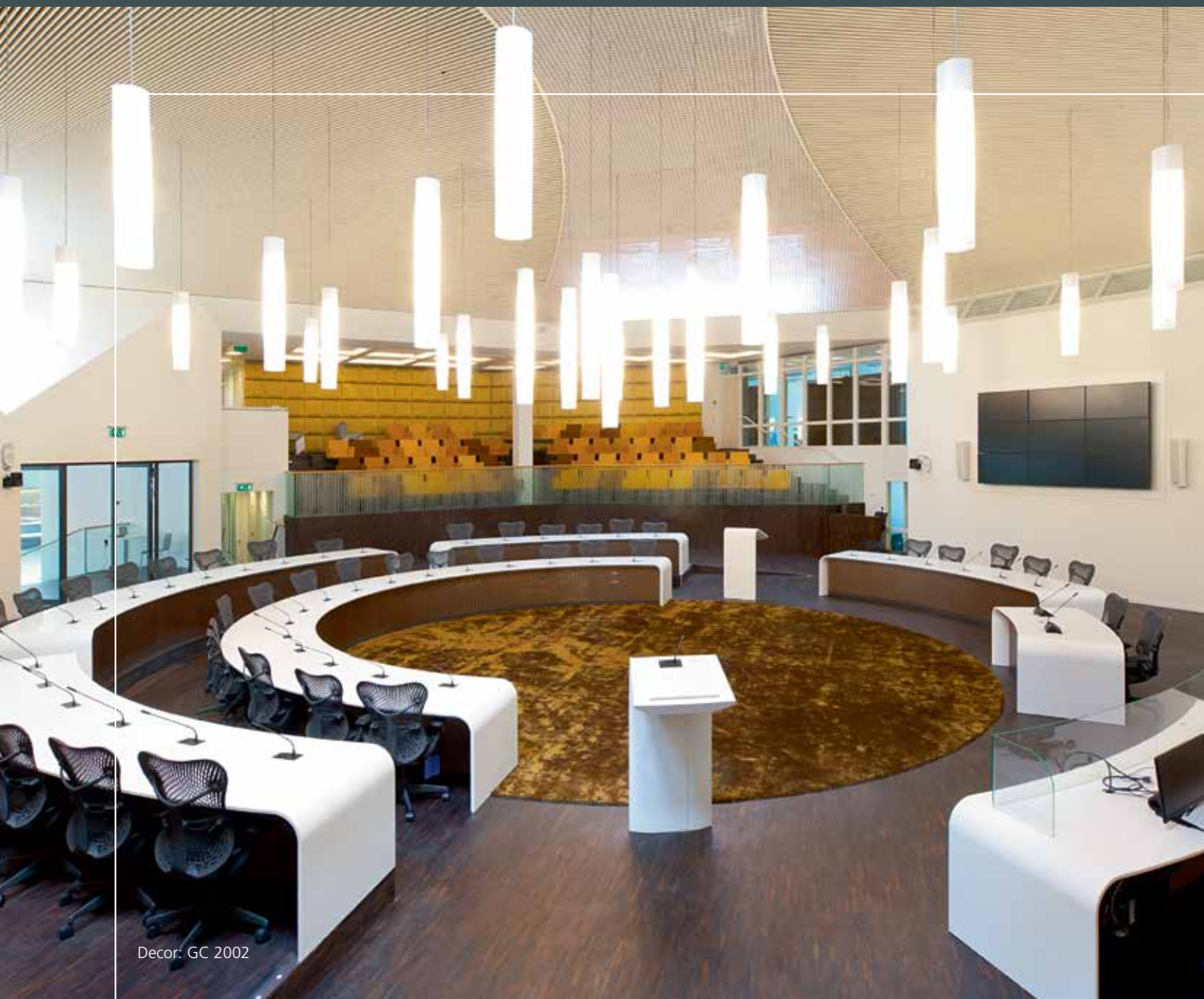
**Photographer**

Bernd Hiepe

**Exclusive and durable**

The advantages of GetaCore®, like durability and surface renewal are playing an important role for interior design. Especially the large size affords the implementation of individual requirements for wall cladding.

## PUBLIC SECTOR



Decor: GC 2002

### Object

Stadthuis Lelystad,  
Netherlands

### Architect

Ector Hoogstad,  
Rotterdam

### Manufacturer

IHC Interior B.V.





**Object**

Rabobank Amerstreek  
Adviescentrum  
Oosterhout Netherlands

**Architect**

Annekoos Littel  
Interieurarchitecten  
BNI, Woerden

**Manufacturer**

IHC Interior B.V.

Decor: GC 2011



Decor: GCV 239

### **Fascination in stone**

Decors with special appeal – an inspiration of the finest natural stones from the Italian region Veneto. The regional context gave this decor line its name.

This innovative development in completely new optics, playing in a special league was honoured with the Interzum Award and the German Design Award. The one of a kind character mirrors its value: each panel of this material is unique in its marbling.

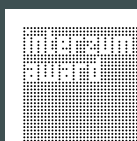




Decor: GCV 239  
Basin: GC-SO-465/335



Decor: GCV 142  
Basin: GC-SO-465/335



interzum award:  
intelligent  
material & design  
2013

**WINNER 2013**  
HOHE PRODUKTQUALITÄT

[www.veneto-getacore.de](http://www.veneto-getacore.de)

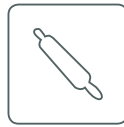


German  
Design Award  
**SPECIAL  
MENTION**

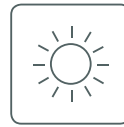


## GENERAL INFORMATION

### QUALITY PROPERTIES



food safe to EN 1186 and  
EN 13130



light fast wool standard level 6  
to ISO 4892, ISO 105-B02 and  
ISO 105-A02



resistant to common  
household chemicals to  
ISO 19712



warm to the touch due to the  
nature of the product



heat resistant up to 180° C  
to ISO 19712



can be repaired and touch  
sanded



seamless joints



easy to clean

### WESTAG-QUALITY – MADE IN GERMANY

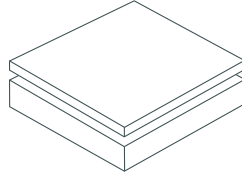
Westag & Getalit AG has been a leading European manufacturer of wood based and synthetic products for more than a century. How do we stand out against other companies? We deliberately decided to locate our production in Germany, namely in Wiedenbrueck and Wadersloh – two sites offering the required determining factors. Efficient performance with a high degree of productivity is guaranteed by continuous investments. Our employees' high motivation and the willingness to contribute to business success with innovative solutions are indispensable.



#### ISO 9001 CERTIFICATION

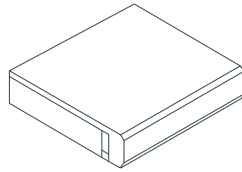
Westag & Getalit fully complies with the international management standards (DIN EN ISO 9001:2000). The uncompromising monitoring of this philosophy and production is focused on during Westag & Getalit's every day workflows. This is not only conducted by our own laboratory, but also by the competence of external and independent audit teams.

## SHEET MATERIAL



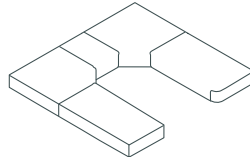
4100 x 1250 x 3/10 mm  
4100 x 615 x 3/10 mm  
2040 x 1250 x 3/10 mm  
2040 x 615 x 3/10 mm  
in quantities of 1

## WORKTOPS



**single postformed:**  
4100 x 600/ 650/ 900/ 1200 x 38,3 mm  
**double postformed:**  
4100 x 670/ 900/ 1200 x 38,3 mm  
in quantities of 1

## CUT-AND-EDGE



All worktop decors are also available as cut-and-lip. Benefit from this service, for example for sink/basin installation in same decor.

## PROCESSING

GetaCore® can easily be processed with standard hard metal-tipped tools. Please kindly also refer to our Processing and Care instructions booklet:

<http://www.westag-getalit.de/en/surfaceselements/mediathek/downloads/surfaces-and-elements/processing-recommendations/>

In order to keep sanding efforts for you as low as possible, sheets are delivered in a wet-sanded surface finish (P600) and are additionally foil-protected. The surfaces can be finished to SuperMat, SemiMat or HighGloss by making use of our sanding recommendations and sanding papers.

## SURFACE MAINTENANCE

GetaCore® maintenance is simple. By means of standard cleaning agents, stains can easily be removed. Contrary to many other materials GetaCore® surfaces can be renewed at any time. Light traces of daily wear and tear and light scratches can simply be removed, thus maintaining the new look of this material.

Valuable hints for care, maintenance and surface renovation for GetaCore® are available in our instruction manual below, allowing you to enjoy the outstanding quality properties of GetaCore® year after year:

[links.westaggetalit.de/careandmaintenance](http://links.westaggetalit.de/careandmaintenance)